



SUSQI NEWS

Greetings!

The Annual Conference will be held in Philadelphia this year! If you haven't been to the annual conference in a while, please consider attending this year's conference at its close to home location. The conference will begin with a Drug Seminar on Monday May 11th and a full agenda scheduled from May 12th at 8am through May 14th at noon. Keep checking the CASA website for the latest information on the speakers and topics. Attendance gives you an opportunity to provide input into national policy, interact with key government and industry officials, as well as provide input into the development of regulations and laws! I hope to see you there!

Nominations are being accepted now through March 1st for the H. Thompson Price, Jr Scholarship which is awarded yearly at the CASA Awards Banquet during the annual conference. The award is given to commemorate the life and service of H. Thompson Price, Jr., a dedicated servant to American consumers for more than twenty-five years. Through his innovative ideas, tireless work, and enthusiastic encouragement, many food and drug regulatory officials and industry officials developed training programs and work-sharing agreements that promoted more effective and efficient consumer protection programs. The criteria for this award reflect the love and dedication that Tom Price had for CASA and for every person that belonged to CASA or supported its goals and objectives. This award stands not only as a tribute to Tom Price, but as a reminder that CASA must always bring new members into its ranks and must always support and encourage the training and development of people. Additional information is available on CASA's website at: <http://www.casafdo.org/scholarship.cfm>

Barbara Allerton, President

Once again, we are requesting possible candidates for our April ballot for officers for the Susquehanna Conference of CASA. We will be electing a Vice-President (a two year term and an automatic move to President); a re-election of Melissa Vaccaro as Susquehanna's Representative to the CASA Board or someone else if so desired, and at least two candidates for member at-large. These positions provide assistance at meetings, greet members and guests at meetings, and help in future planning of programs for CASA.

Anyone interested should please contact Ken Hohe by e-mail at Kenhohe@aol.com as soon as possible. I hope to have a final ballot prepared for distribution prior to the April 16, 2009 meeting.

Statewide Food Safety Certification Training

The Penn State Cooperative Extension, Division of Continuing Education, has scheduled a number of Food Safety Certification training courses for March-August 2009. The locations, dates, contact persons, phone numbers and e-mail addresses are listed below.

| <u>Location</u> | <u>Dates</u> | <u>Contact Person</u> | <u>Phone Number</u> | <u>E-mail</u> |
|------------------|---------------|-----------------------|---------------------|--|
| Carlisle | 04-6, 17 | Karen Karnes | 717-948-6536 | ksk1@psu.edu |
| | 06-29; 07-10 | “ “ | “ “ “ | “ “ “ |
| Chambersburg | 04-27; 05-08 | Judy Yohn | 717-709-0778 | jeY114@psu.edu |
| | 07-13, 27 | “ “ | “ “ “ | “ “ “ |
| Gettysburg | 04-20; 05-01 | Judy Yohn | 717-709-0778 | jeY114@psu.edu |
| | 08-17, 28 | “ “ | “ “ “ | “ “ “ |
| Lancaster | 03-17,24, 31 | Debbie Rubin | 717-299-7667 | dpr5@psu.edu |
| | 05-6, 13, 20 | “ “ | “ “ “ | “ “ “ |
| | 06-3, 10 | “ “ | “ “ “ | “ “ “ |
| | 07-28; 08-04 | “ “ | “ “ “ | “ “ “ |
| | 05-12, 19, 26 | “ “ | “ “ “ | “ “ “ |
| Lebanon | 02- 19, 26 | Karen Karnes | 717-948-6536 | ksk1@psu.edu |
| | 07- 14, 21 | “ “ | “ “ “ | “ “ “ |
| McConnellsburg | 06-08, 19 | Judy Yohn | 717-709-0778 | jeY114@psu.edu |
| Middletown | 03-17, 24 | Karen Karnes | 717-948-6536 | ksk1@psu.edu |
| | 06-02, 09 | “ “ | “ “ “ | “ “ “ |
| Schuylkill Haven | 03-13, 14 | Jodi Staller | 570-385-6221 | zjs7@psu.edu |
| York | 04-14, 21 | Annie Haines | 717-771-4197 | azh2@psu.edu |
| | 07-16, 23, 30 | “ “ | “ “ “ | “ “ “ |

FEBRUARY IS HEART HEALTH MONTH



High cholesterol is a leading risk factor for heart disease.

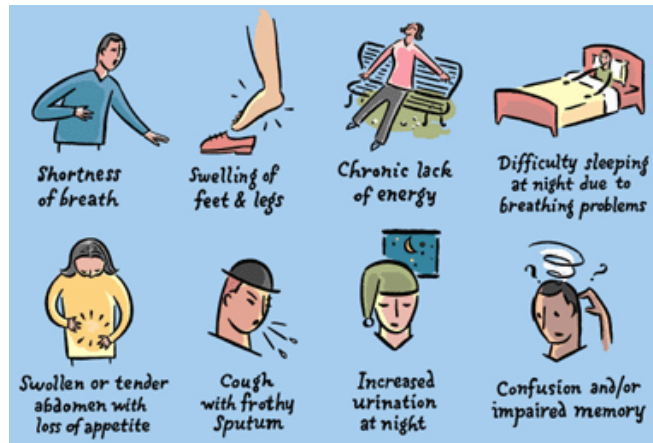
Heart disease is the #1 health problem for both women and men in the United States. And if you have high cholesterol, you may have twice the risk of heart disease. But, you may not know you have high cholesterol. People who have high cholesterol often have no symptoms.

High cholesterol occurs when you have too much LDL in your blood. LDL is low-density lipoprotein, or "bad" cholesterol. The higher your LDL, the more chance you have of getting heart disease. Cholesterol can build up along the walls of your arteries. When too much builds up, it can block the flow of blood. Arteries that supply blood to your heart or to your brain can become blocked. This can cause a heart attack or stroke. That's why managing high cholesterol is important to heart health. Knowing your risk factors is an important first step toward lowering your risk for heart disease.

Heart Failure Symptoms

Heart failure symptoms are not always apparent. Some people in the very early stages of heart failure may have no symptoms at all. And others dismiss feeling tired and experiencing shortness of breath as signs of growing older.

But some heart disease symptoms are more obvious. When the heart is not pumping properly or efficiently, daily activity can cause shortness of breath or difficulty in breathing when lying down. The legs and ankles may swell because the body is retaining water. Feeling weak and tired is common. Ordinary daily activities like going to the grocery store or even walking up a flight of stairs can be exhausting.



Because of the heart's inability to efficiently pump blood and supply your organs, such as the kidneys and the brain, you may experience a number of symptoms including:

- **Shortness of breath**
- **Swelling of the feet and legs**
- **Lack of energy, feeling tired**
- **Difficulty sleeping at night due to breathing problems**
- **Swollen or tender abdomen, loss of appetite**
- **Cough with "frothy" sputum**
- **Increased urination at night**
- **Confusion, impaired memory**

Your heart failure symptoms will help your doctor classify the severity of your heart failure and monitor the effects of drug and/or device therapy.

SUSQUEHANNA CONFERENCE OF CASA QUARTERLY TRAINING MEETING

Date: **THURSDAY, February 19, 2009**

Location: **Lower Macungie Twp. Community Center
3400 Brookside Road, Macungie, PA 18062
610 966-4343**

Directions: From the west, exit I-78 at exit 49 for PA Route 100 SOUTH. Follow PA 100 for appx. 4.5 miles. At SAUERKRAUT LANE (traffic light) turn left. Continue 2.5 miles to Brookside Road (traffic light). Turn right. Meeting site will be on left at 3400 Brookside Road. Lower Macungie Township is located in western Lehigh County, in the greater Allentown/Lehigh Valley area. Lower Macungie Township is approximately 7 miles south of I-78.

Agenda:

8:30 – REGISTRATION / WELCOME – Barbara Allerton
Susquehanna Conference President

URBAN DEER HERDS - PUBLIC HEALTH IMPLICATIONS

Dr. John Morgan, Wildlife Management Supervisor, PA Game Commission - Southeast Region

LYME DISEASE-signs/symptoms/treatment/prevention/tick removal/management

Sandra Deaven, RN, Communicable Disease Nurse Consultant
Southcentral District Office, Pennsylvania Department of Health

WEST NILE VIRUS - UPDATE

Louise Bugbee, Educator
Lehigh County West Nile Virus Program Coordinator,
Penn State Coop Ext Office - Lehigh County

COUNTRY OF ORIGIN LABELLING UPDATE

US Department of Agriculture Speaker - TBA

FOOD CODE UPDATE & OPEN PANEL DISCUSSION

Howard Rabinovitch, FDA Regional Food Specialist (also CASA President)
Melissa Vaccaro, PA Dept of Agriculture - Food Specialist

***PLEASE SUBMIT TOPICS OF INTEREST OR YOUR QUESTIONS, DIRECTLY TO
MELISSA AT: mvaccaro@state.pa.us by February 12th.

-3:45PM Evaluations / Q&A

+++++

Pre-registration Deadline: February 17, 2009 - to arrange for adequate seats and refreshments.
Please register early. YOUR COOPERATION IS SINCERELY REQUESTED.

NAME _____ Agency/Firm _____

Address _____

Email _____ Phone _____

PLEASE BRING A FRIEND OR ASSOCIATE WITH YOU!! FIRST TIME ATTENDEES ARE ALWAYS WELCOME!! MEMBERSHIP RENEWALS CAN BE PAID AT TRAINING.

Registration fee: \$5, payable at training, to: CASA, Susquehanna Conference

Email to: tveresink@easton-pa.gov or Fax to: 610 250-6607 or Mail to: CASA, Susq Conference, c/o Easton Health Bureau, 1 S Third Street, Easton, PA 18042

Questions – contact Ted Veresink @ 610 250-6765

IN CASE OF INCLEMENT WEATHER, CHECK YOUR E-MAIL FOR UPDATE ON 2/18.

Recall of Peanut-Containing Products: *Salmonella* Typhimurium

<http://www.fda.gov/oc/opacom/hottopics/salmonellatyph.html>

A combination of epidemiological analysis and laboratory testing by state officials in Minnesota and Connecticut, the Food and Drug Administration (FDA), and the Centers for Disease Control and Prevention (CDC) have enabled FDA to confirm that the sources of the outbreak of illnesses caused by *Salmonella* Typhimurium are peanut butter and peanut paste produced by the Peanut Corporation of America (PCA) at its Blakely, Georgia processing plant.

Peanut butter is sold by PCA in bulk containers ranging in size from five (5) to 1,700 pounds. The peanut paste is sold in sizes ranging from 35-pound containers to product sold by the tanker container. Neither of these products is sold directly to consumers. However, through its investigation, FDA has determined that PCA distributed potentially contaminated product to more than 100 consignee firms, for use as an ingredient in hundreds of different products, such as cookies, crackers, cereal, candy and ice cream.

FDA initiated an inspection of PCA's Blakely plant on January 9 shortly after learning that this firm might be linked to the ongoing Salmonella outbreak. FDA finished its inspection on January 27. A list of problems observed by FDA investigators during their inspection is available at this link: <http://www.fda.gov/ora/frequent/default.htm>. An amendment to the original list was issued on February 5, 2009. This list is not a final agency determination regarding compliance. The deficiencies observed indicate that the plant was not compliant with Current Good Manufacturing Practices required by the FDA. These deficiencies are related to cleaning programs and procedures as well as failure to implement steps to mitigate Salmonella contamination in the facility.

On January 28, PCA issued an expanded voluntary recall of all peanuts and peanut products processed in its Blakely, Georgia facility since January 1, 2007. The expanded recall includes all peanuts (dry and oil roasted), granulated peanuts, peanut meal, peanut butter and peanut paste. All of the recalled peanuts and peanut products were made only at the company's Blakely, Georgia facility.

On January 30, 2009 FDA confirmed that a criminal investigation of PCA is underway.

In the course of gathering information during an investigation, it is sometimes necessary that FDA refine reports and other documents based on new facts that are discovered or further provided by records or by the firm. On January 27, 2009, after an inspection that began on January 9, 2009, FDA Investigators issued form FDA-483 to management of the Peanut Corporation of America. The inspection involved sampling, documentation collection, and included a heavy focus on information needed to document and support product recall activities. After a more detailed review of the many records provided during this inspection, FDA determined that certain information provided by PCA management during the inspection was not consistent with the subsequent analysis of the company's records. On February 5, 2009, FDA issued the amended FDA-483 to now cover this information and additional details about the private laboratory testing.

Based on statements from the firm's management during the inspection, FDA's investigators recorded in the original FDA-483 that the firm had shipped products after having received a positive Salmonella test for the lot, followed by a negative Salmonella test for the lot. Having scrutinized many records related to the firm's testing and shipping of lots, the investigators have amended their recorded observations to present the variety of testing and shipping circumstances reflected by the firm's records.

It is important to note that for all lots identified in the FDA-483 (original and amended), the firm received positive Salmonella test results for the products shipped. For example, in some situations the firm received a positive Salmonella test result, followed by a later negative result, and then shipped the products. In some other situations, the firm shipped the products before it had received the positive test results. For these, sometimes the firm received a subsequent negative test, and sometimes no additional testing appears to have been done.

FDA has been working with the company and purchasers of PCA's peanut butter and peanut paste to identify affected products and facilitate their removal from the market. FDA and state officials have visited in excess of 1,000 firms who purchased PCA products. Now, the same type of work is continuing and includes the additional products in the expanded recall.

Companies nationwide that received product made by PCA has issued voluntary recalls of their products. As FDA gathers additional information about these products, the list of recalled products is expected to expand. FDA has created a searchable database for these products, which can be found at <http://www.accessdata.fda.gov/scripts/peanutbutterrecall/index.cfm>. The list is updated frequently.

Product recalls include some pet food products that contain peanut paste that was made by PCA. While the risk of animals contracting salmonellosis is minimal, there is risk to humans from handling these products. It is important for people to wash their hands--and make sure children wash their hands--before and, especially, after feeding treats to pets. Further information for consumers is located in the [Frequently Asked Questions](#) section located on the web site. The pet food products are also included in the searchable data base of recalled products.

Major national brands of jarred peanut butter found in grocery stores are not affected by the PCA recall.

FDA and CDC recommendations for consumers include:

Consumers are urged to check FDA's web site to determine which products have been recalled and will be recalled in the coming days. Any product that is on the recall list should be disposed of in a safe manner. Consumers are also urged to wash their hands after handling potentially contaminated products.

If consumers are unsure whether a peanut-containing product is potentially contaminated, they should avoid consuming it or feeding it to their pet until they obtain more information regarding the product. Persons who think they may have become ill from eating peanut products are advised to consult their health care providers.

For Retailers

Stop selling recalled products.

For Directors of Institutions and Food Service Establishments

Ensure that they are not serving recalled products.

For Manufacturers

Inform consumers about whether their products could contain peanuts or peanut products from the Peanut Corporation of America (PCA). If a manufacturer knows its products do not contain peanuts or peanut products from PCA, it may wish to provide this information to consumers. For specific guidance: [Guidance for Industry: Product Recalls, Including Removals and Corrections](#)

The FDA will closely monitor these events by continuing to work with the firms on the details of their actions, conducting follow-up audits and inspections, monitoring the progress of the firms' actions, working with state and local regulatory authorities, and notifying our foreign regulatory counterparts of products that have now been confirmed as having been distributed internationally.

For the latest information on the outbreak and the epidemiological investigation, including number of illnesses and a list of states reporting illnesses, go to the CDC web page at <http://www.cdc.gov/salmonella/typhimurium/>.